

Tank Size (All tanks are carbon steel)

Diameter x Side Shell Length (Not tangent-to-tangent)

- ☐ 24 x 60 inch (70 inch maximum side shell)
☐ 30 x 57 inch (65 inch maximum side shell)
☐ 36 x 54 inch (62 inch maximum side shell)
☐ 42 x 52 inch (60 inch maximum side shell)
☐ 48 x 48 inch (60 inch maximum side shell)

_____ Other Side Shell Length (If required)

_____ Maximum Overall Height (If required)

Head Shape

- ☐ Flanged & Dished (Standard for Non-Code)
☐ ASME Flanged & Dished (Standard for ASME Code)

Design Pressure

- ☐ 100 PSI ☐ 125 PSI ☐ 150 PSI
☐ Full Vacuum (ASME Code tanks only)
☐ Other _____

Code Requirements

- ☐ ASME Code ☐ Non-Code
☐ Non-Code with Hydro Test

Tank Lining (Tank Interior)

- ☐ Polyethylene Rotomolded ☐ Vinyl Ester

Tank Coating (Tank Exterior)

- ☐ Standard Epoxy (Blue)
☐ Urethane (Outdoors White)
☐ Urethane (Oxblood Red)
☐ Other _____

Tank Legs & Support Skid

- ☐ Strap Legs
☐ Skid – Forklift, Galvanized (Not coated)

Support Clips

- ☐ External: Qty _____

Installation of SWT Materials

(Must provide detailed prints to be included in quote)

- ☐ Internals ☐ External Piping & Valves

American Iron & Steel Act (Federal EPA \$)

- ☐ Yes (ASME Code tanks only)

Document Package ^[1] (All ASME tanks include U-1A)

- ☐ Level 1 (\$200) ☐ Level 3 (\$550)
☐ Level 2 (\$350) ☐ Level 4 (\$750)

[1] Document Package prices shown are for up to three (3) tanks.
For details, see ASME Document Package Options in next column.

Available Fittings

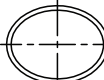
All fittings are carbon steel

HH (Hand Hole)

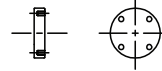
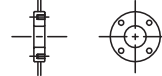
Offset on top
4 x 6 inch
6 x 8 inch
(36 inch dia. tank min.)

**MW (Manway)** ^[2]

Elliptical
12 x 16 inch (Std)
14 x 18 inch (Vertical)
(42 inch dia. tank min.)



[2] 45°, 90° or 180° from In/Out

BF (Blind Flange)**SD (Single Drilled Pad Flange)****SW (Sight Window)**

3 x 12 inch

**ASME Document Package Options for Steel Tanks**

U-1A is included with all ASME Code tanks

Level 1

As-Built Drawings
Material Test Report (MTR) for Head & Shell

Level 2

Level 1 Items
Weld Details
Weld Procedures
Welding Procedure Specification (WPS)
Procedure Qualification Record (PQR)
Paint Reports
Holiday Free
Mil Thickness

Level 3

Level 2 Items
ASME Calculations
Weld Map
Welders Quality Log
Nameplate Image
Non-Destructive Examination (NDE) Reports

Level 4

Level 3 Items
Material Test Report (MTR) for All
Pressure Boundry Parts

Company _____

Contact _____

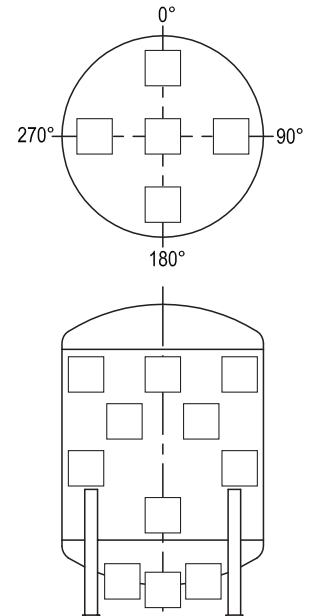
Phone _____ Fax _____

Email _____

Quantity _____ Quote No. _____

Service Type ☐ Water ☐ Water & Acid ☐ Water & Caustic
☐ Other _____

Show letter (from
"Mark" column) in
appropriate box for
fittings listed in
"Schedule of Openings."
Location in head or
shell is important
(exact position is not).



Ship _____ weeks after
drawing approval

Schedule of Openings

Mark	Type	Size	Service
A			
B			
C			
D			
E			
F			
G			
H			

Customer Notes (Include any in-shop inspection visits)**Safe Water Technologies, Inc.**

996 Bluff City Blvd, Elgin, IL 60120 USA
847-888-6900 | www.swtwater.com